



## 2466 OAKWOOD MOD



### 2466 OAKWOOD MOD

Model number:

**3 beds • 2 baths • 1722 sq.ft. • 32' width • 66' depth**

Our home building facilities invest in continuous product and process improvements. Plans, dimensions, features, materials, specifications and availability are subject to change without notice or obligation. Renderings and floor plans are representative likenesses of our homes and may differ from the actual homes. We invite you to tour a Home Center near you and inspect the highest value in quality housing available or call (910) 739-6123 to speak with a Home Consultant. Copyright 2017, CMH. All rights reserved.

<https://www.claytonlumberton.com>

### CLAYTON HOMES- LUMBERTON

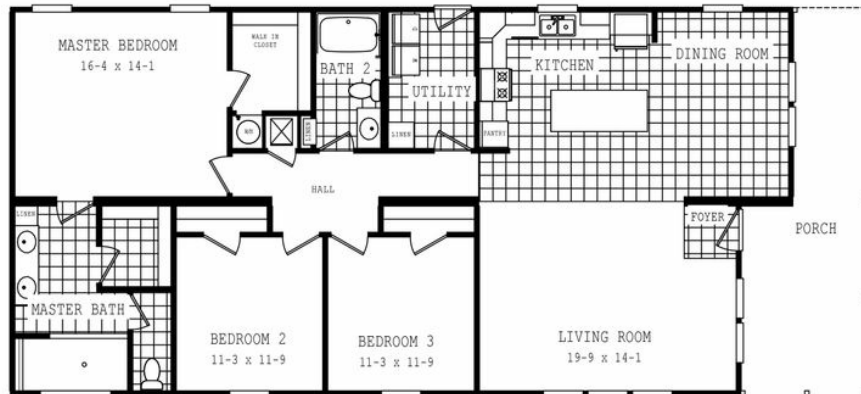
6684 HIGHWAY 41 NORTH  
LUMBERTON, NC 28358

Monday - Thursday: 9am to 6pm  
Friday: 9am to 6pm  
Saturday: 9am to 5pm  
Sunday: Closed

(910) 739-6123



## 2466 OAKWOOD MOD



### 2466 OAKWOOD MOD Model number:

**3 beds • 2 baths • 1722 sq.ft. • 32' width • 66' depth**

Our home building facilities invest in continuous product and process improvements. Plans, dimensions, features, materials, specifications and availability are subject to change without notice or obligation. Renderings and floor plans are representative likenesses of our homes and may differ from the actual homes. We invite you to tour a Home Center near you and inspect the highest value in quality housing available or call (910) 739-6123 to speak with a Home Consultant. Copyright 2017, CMH. All rights reserved.

<https://www.claytonlumberton.com>

### CLAYTON HOMES- LUMBERTON

6684 HIGHWAY 41 NORTH  
LUMBERTON, NC 28358

Monday - Thursday: 9am to 6pm  
Friday: 9am to 6pm  
Saturday: 9am to 5pm  
Sunday: Closed

(910) 739-6123